

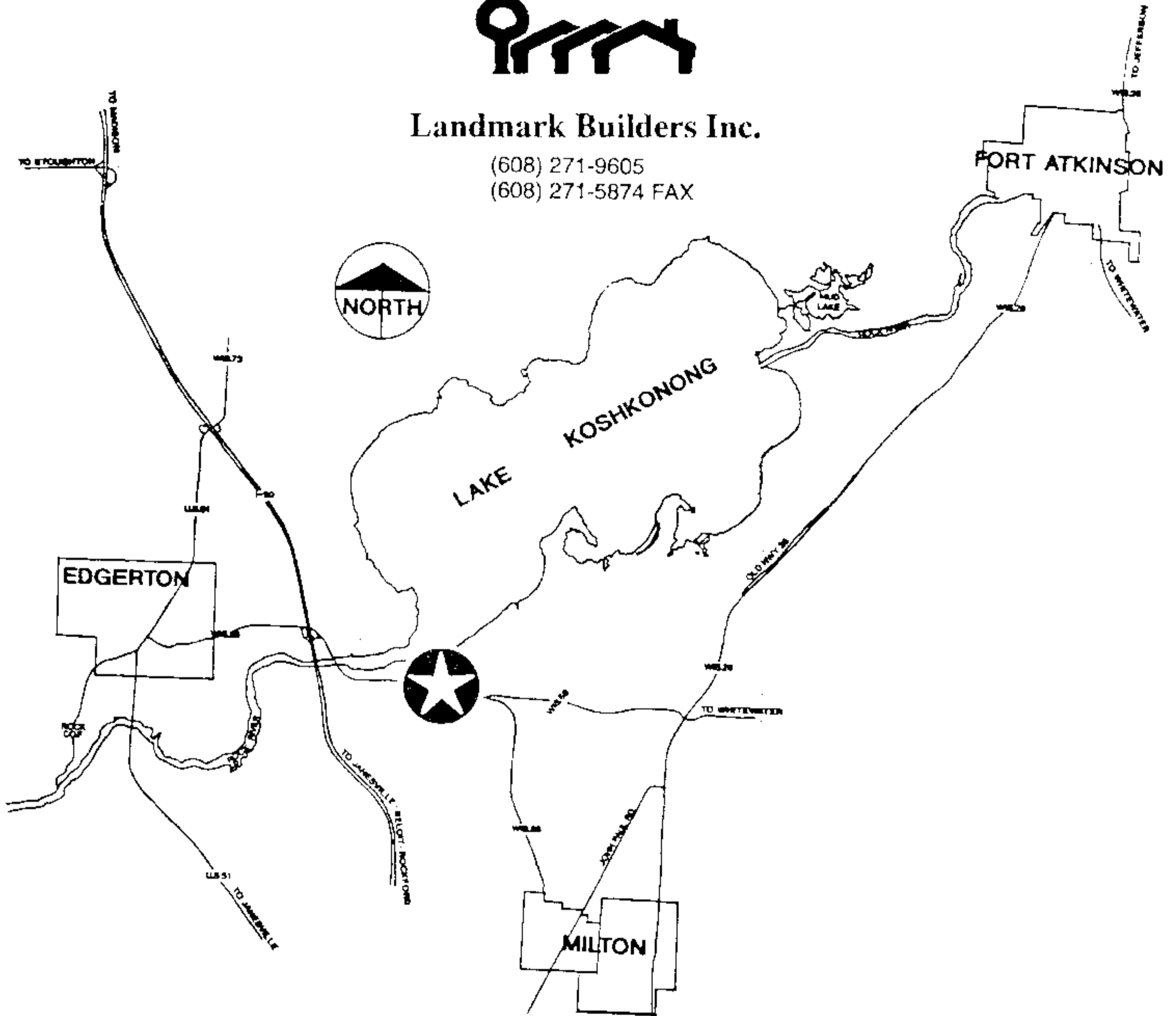
PROJECT LOCATION



Landmark Builders Inc.

(608) 271-9605

(608) 271-5874 FAX



PROJECT INFORMATION

General Site Amenities - Approximately 11.25 acres of land

- Swimming pool and sun deck
- Horseshoes
- Shuffle board
- Abundant green space
- Picnic and barbecue area on lakefront
- Pier
- Boat launch
- Boat slips available

Exterior Amenities

- Beautiful brick and vinyl maintenance-free siding
- Wood decks overlooking the lake
- Insulated steel panel garage door, with opener
- Insulated steel front entry door
- Low E insulated glass clad finish windows

Interior Features

- General Electric® Appliance Package: Refrigerator, range, dishwasher, range hood, garbage disposal
- Oak doors and trim throughout
- Custom-made oak raised panel cabinetry
- Polished brass Schlage hardware
- Oak bath accessories
- Large plate glass mirror in each bath
- Luxurious stain-resistant carpeting
- Beautiful vinyl floor (allowance)
- Fireplace with ceramic and oak mantle and hearth (gas log optional)
- Cultured marble vanity tops
- Abundant closet space

Safety

- Dead bolt lock on all entrances
- Smoke detectors on all floors
- One hour fire separator between units

Energy Features

- Natural gas 90+ efficiency Heil furnace
- Heil 10 SEER air conditioning
- Energy saving R19 fiberglass insulated walls
- R44 blown fiberglass ceilings

Location

Two minutes from I-90 ♦ 20 minutes from Madison Beltline

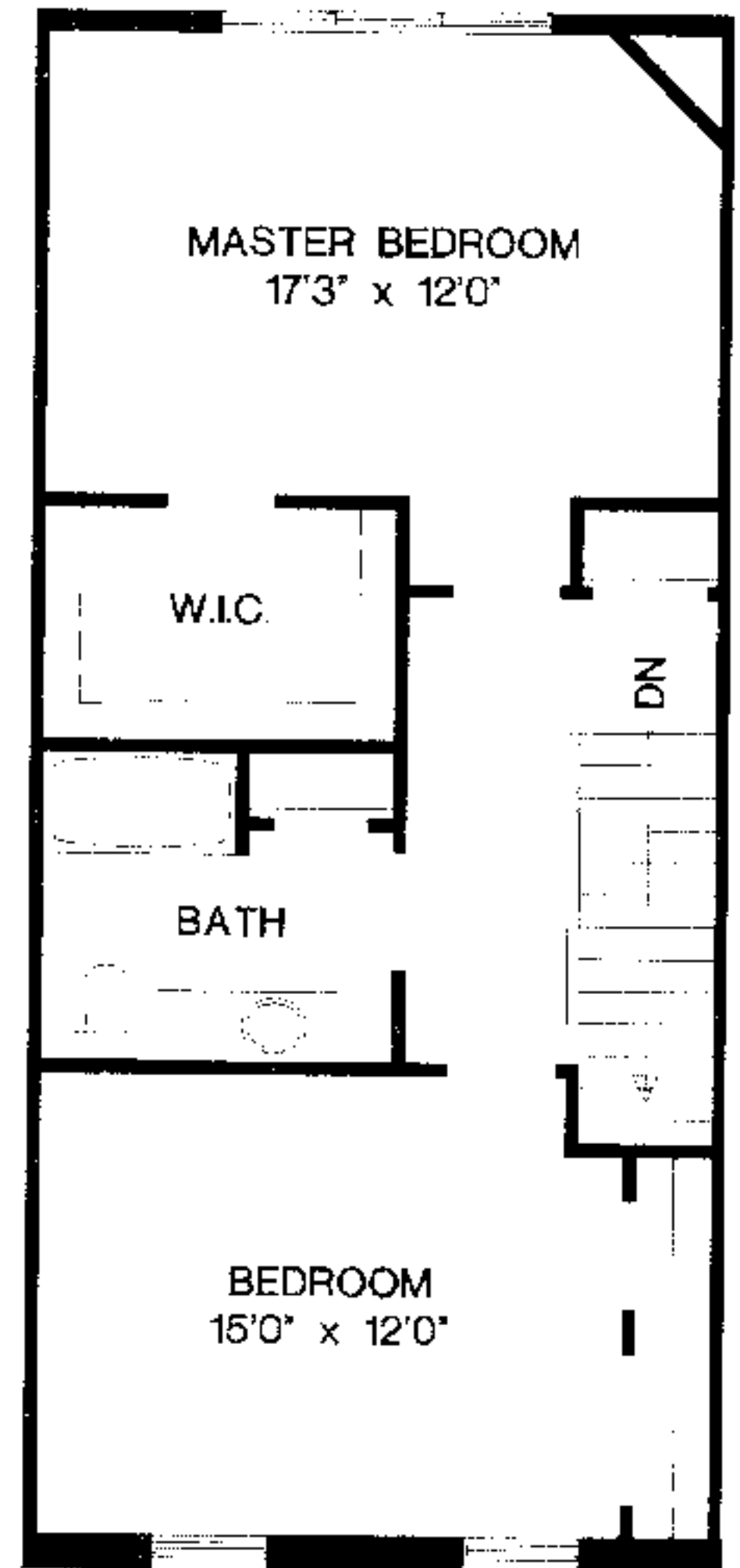
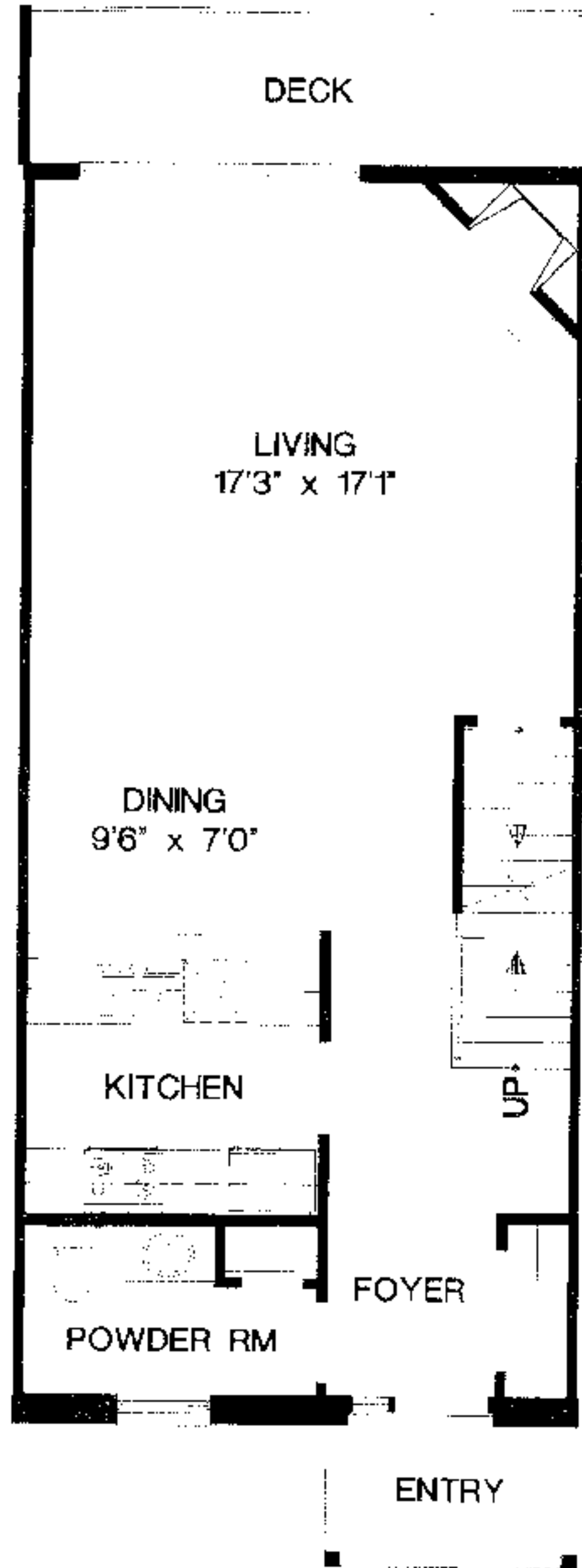
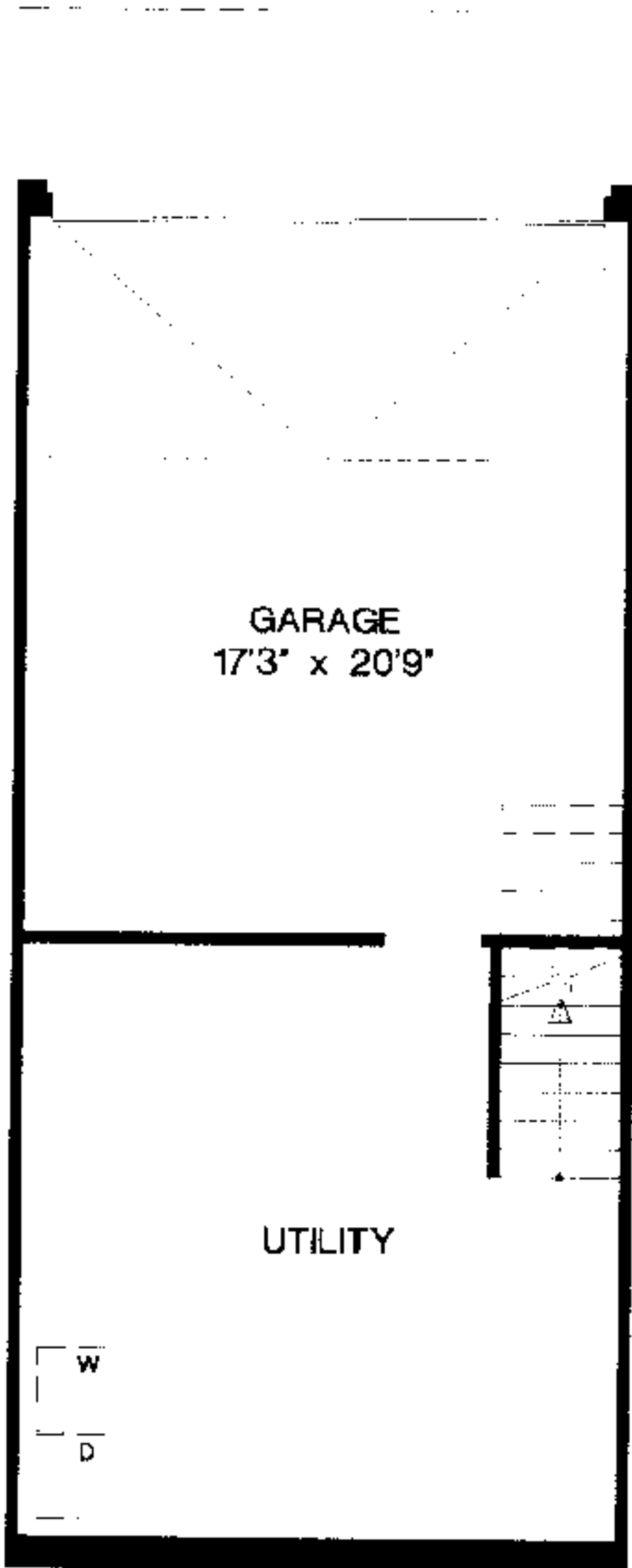
Note:

All photos shown are of similar units previously built by this developer. Landscaping and final site configuration are subject to change. Room sizes and square footage notations may not be exact.

Floor Plans

The Walnut

NOTE: Possible 3rd Floor Bedroom/Loft
in Buildings A & C
(1900 sq ft)



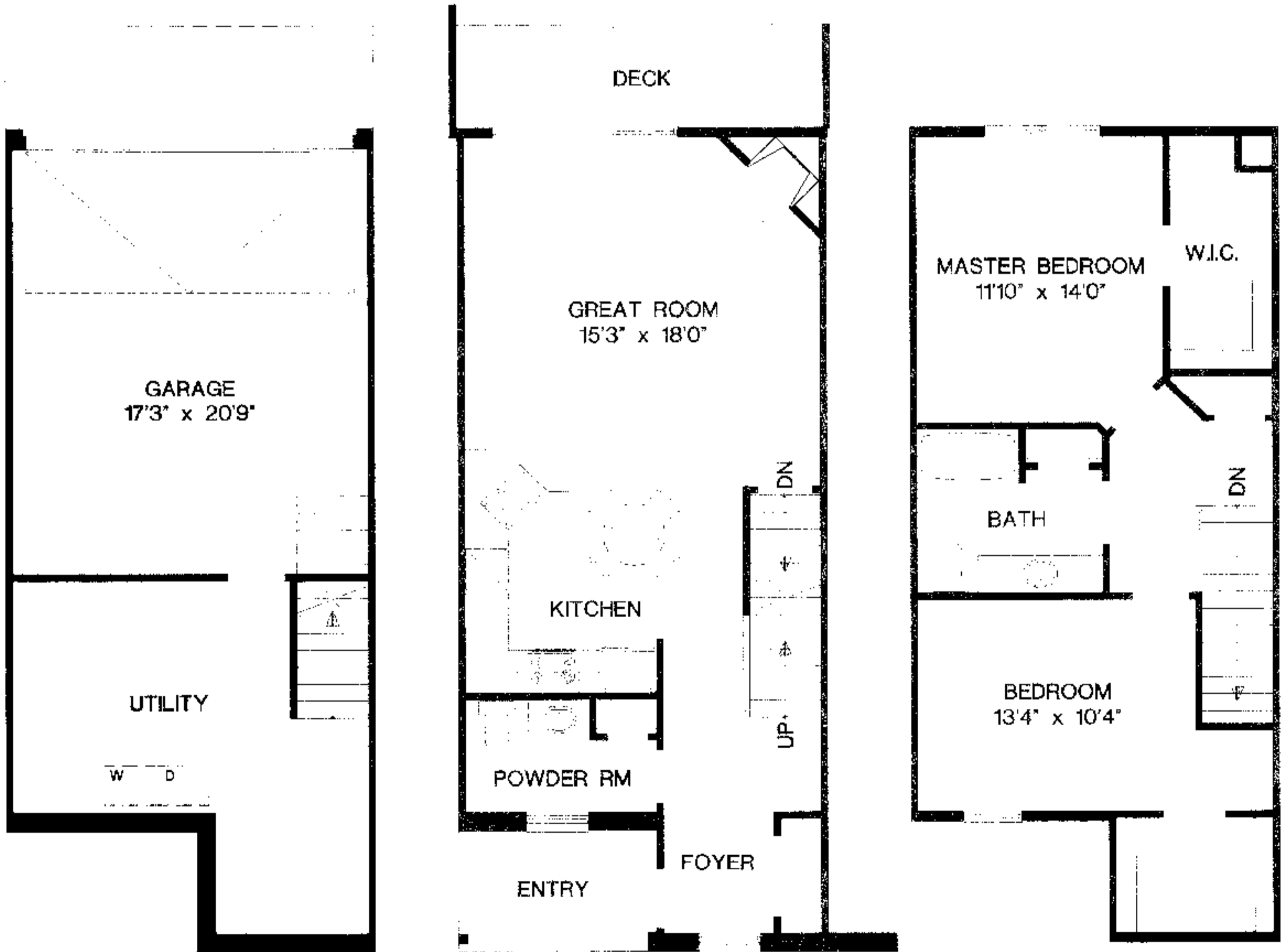
1450 FINISHED S.F.

Floor Plans

The Willow

Kitchen Option 2

NOTE: Upper Floor Plan
May Vary



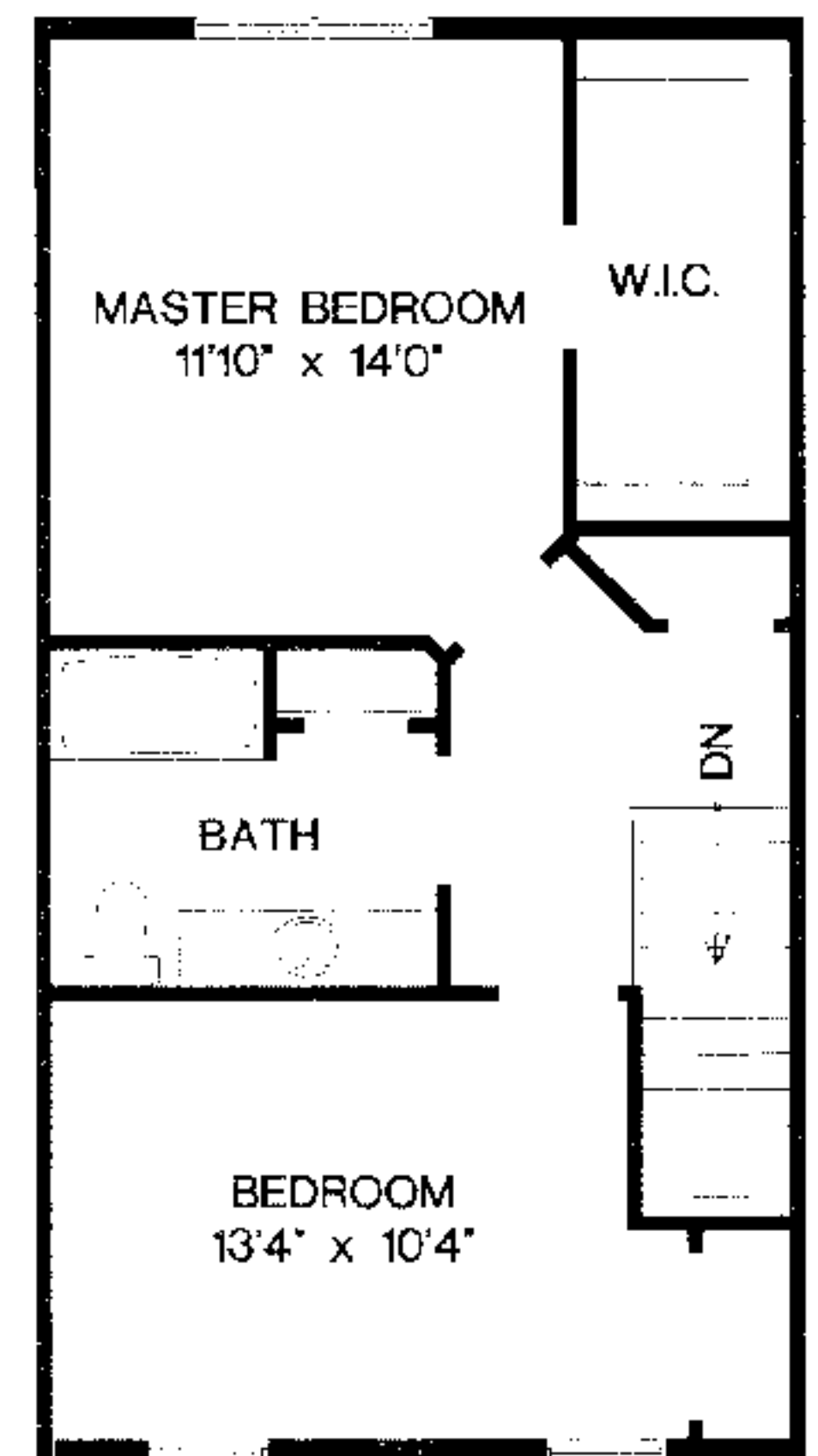
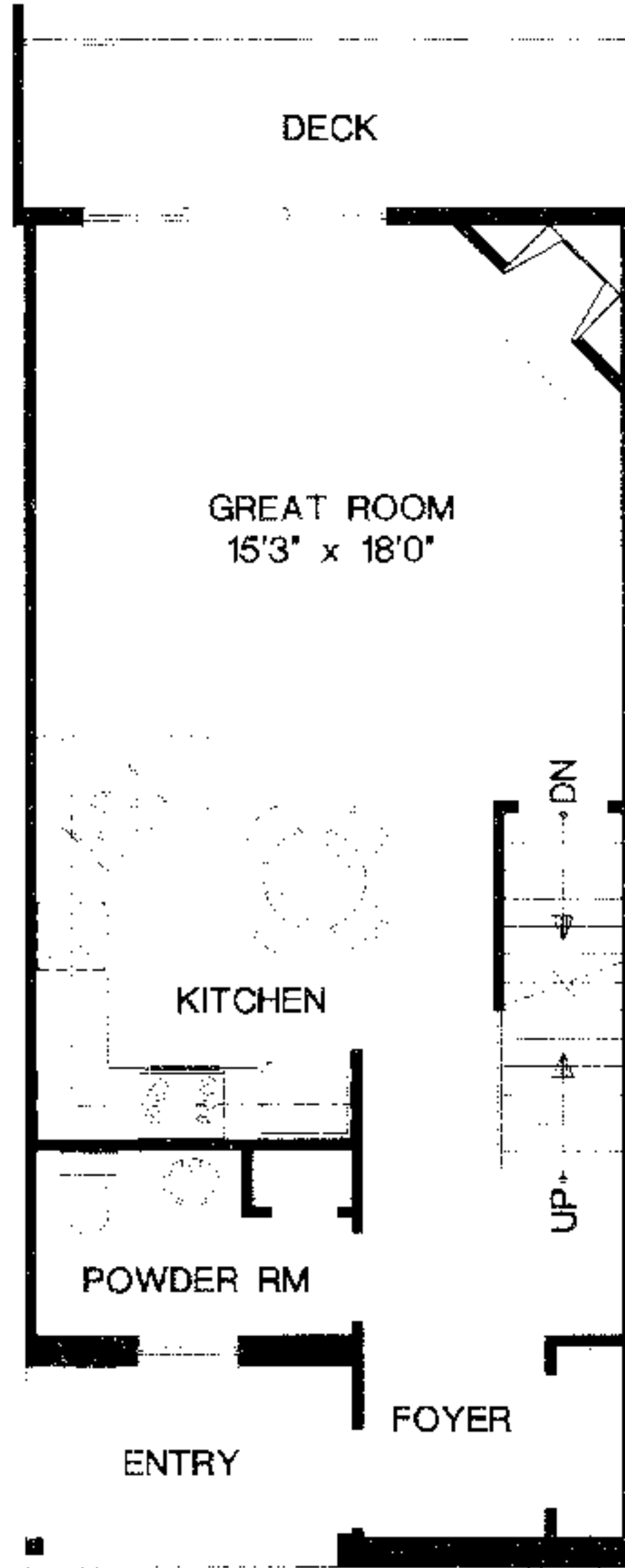
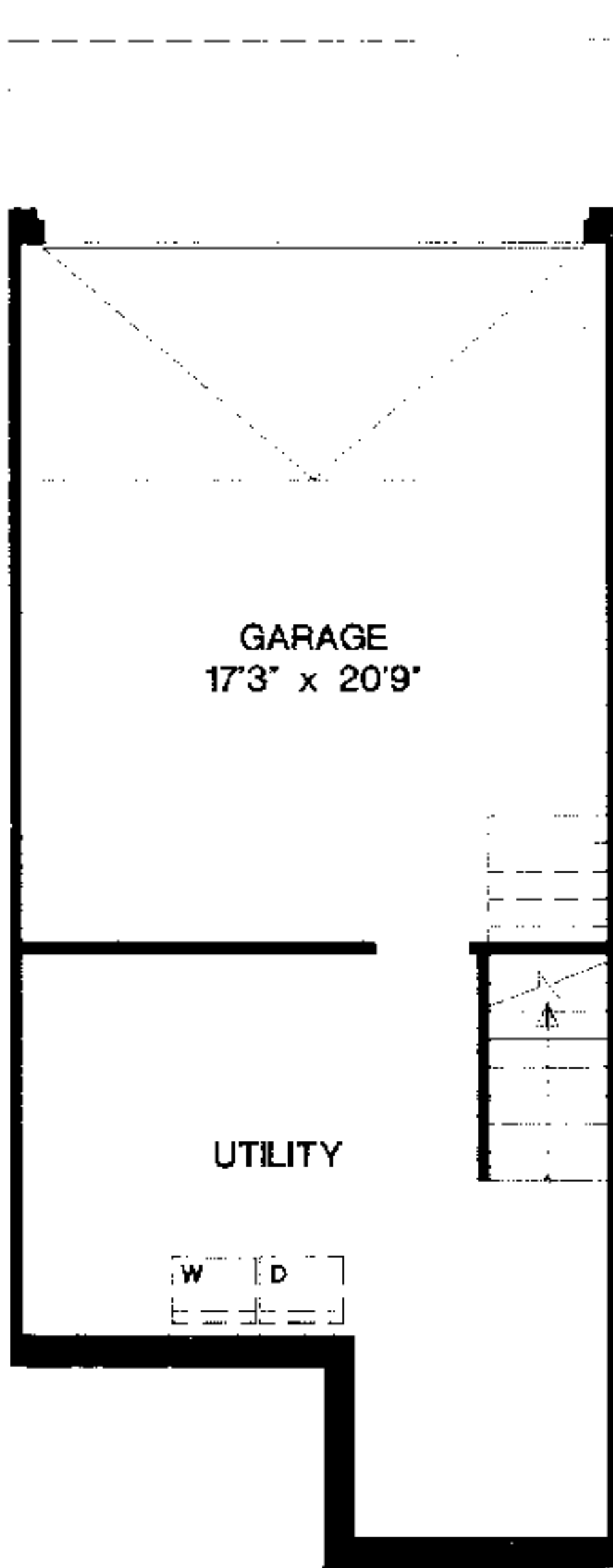
1325 FINISHED S.F.

Floor Plans

The Ash

Kitchen Option 2

NOTE: Upper Floor Plan
May Vary

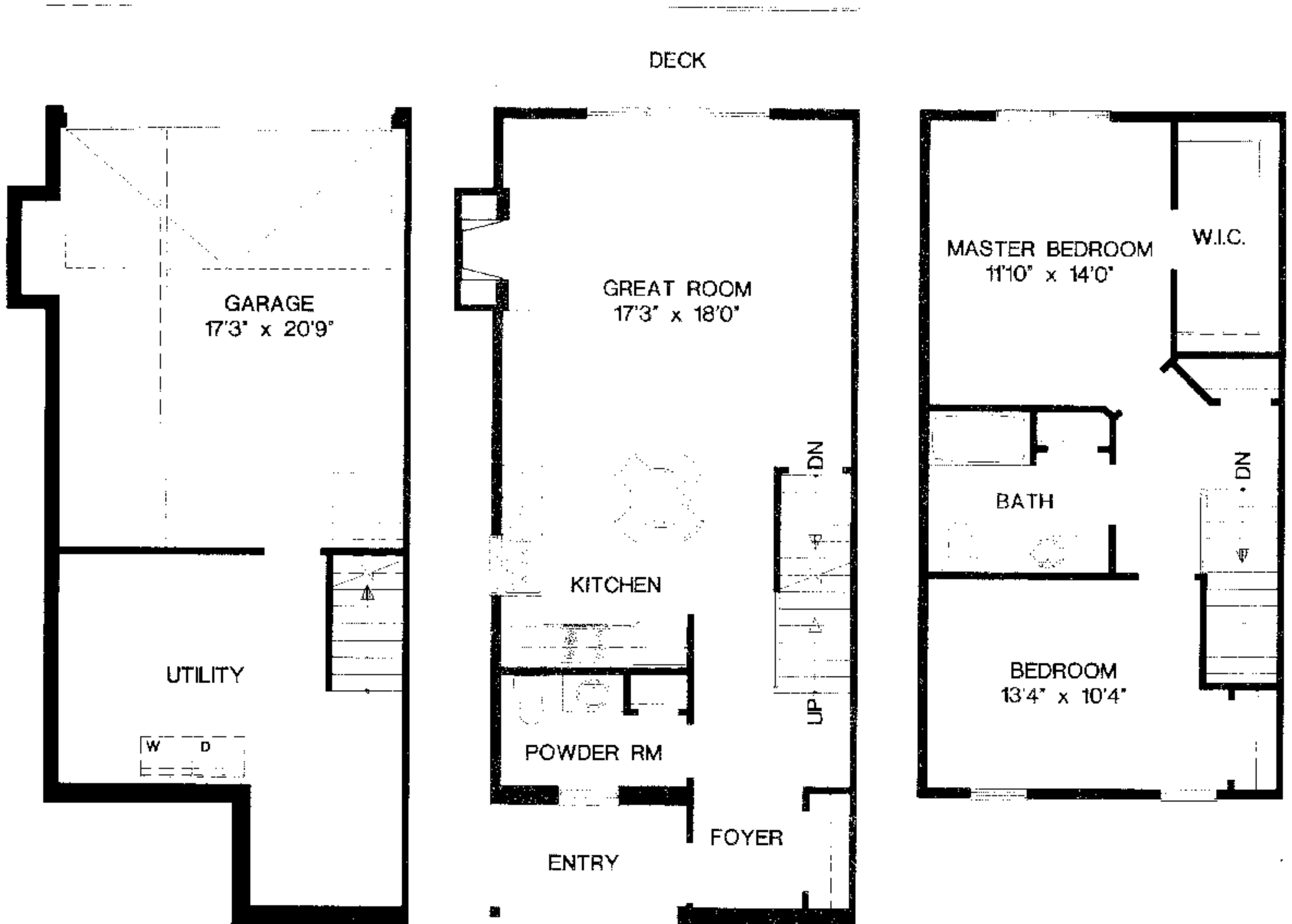


1275 FINISHED S.F.

Floor Plans

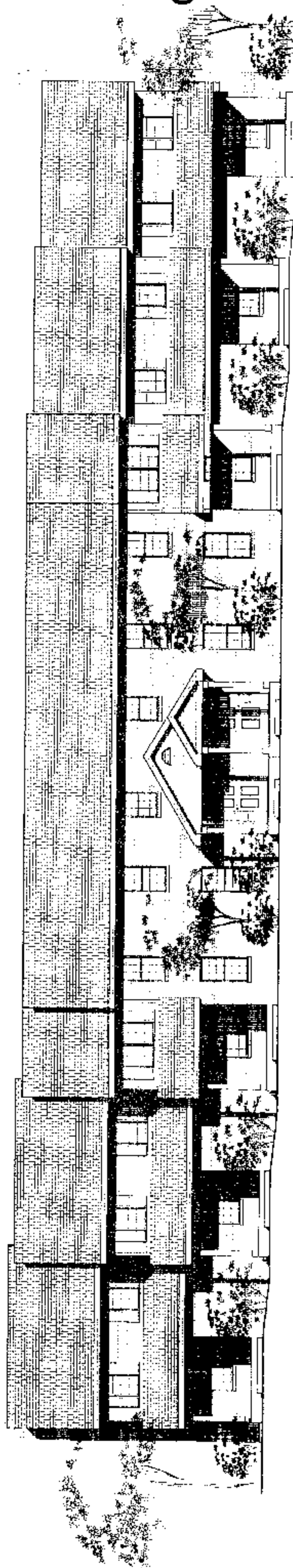
The Spruce

NOTE: Upper Floor Plan
May Vary

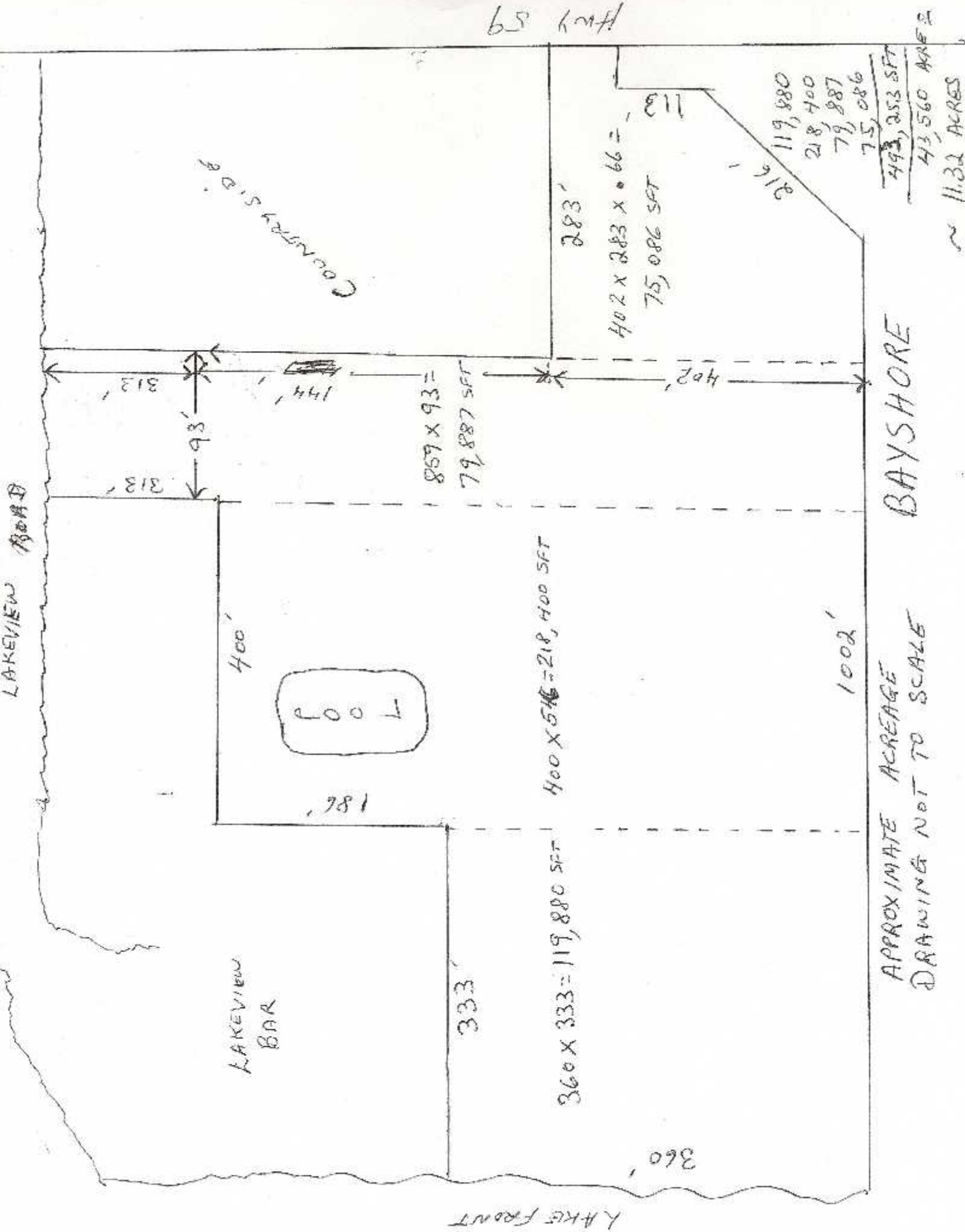


1275 FINISHED S.F.

Building Elevation



FRONT ELEVATION
3/32" = 10'



HWY 59